

GENEVA MILLS BRINGS YOU ECO FRIENDLY PHASE III

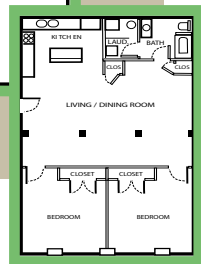
Parkside

UNITS For LIVING or WORKING

**IN PAINTING
TODAYS VALUE PICTURE,
WE DIDN'T FORGET
THE GREEN!**

Enjoy ground floor designer units with good size, big windows that allow natural light to brighten up it's airy and functional space. All units include full bath and laundry. Efficient kitchen area features lifetime countertops, and energy saving appliances. Large closets and plenty of space for living room, bedroom, or work studio. Many options available for combined business and home living.

Green Construction Maximizes Economic, Environmental, and Health Benefits.
Solar Hot Water Heating • Energy Efficient Appliances and Lighting
• Green Plaster Board Partions, Insulation and more.



Typical Floor Space Plans

Relax and enjoy the moment
in our private park
next to Whipple pond.



Reserve Now!
Own, Lease, or Lease-To-Own.

1117 Douglas Avenue, North Providence, RI 02904
Appointments Only

Allyson.Lancia@NEMoves.com or 401-741-4708